

**inox**  
LIGHTING INNOVATORS

t +44(0)1702 468165  
e sales@inox.co.uk  
w inox.co.uk

## MonoRail

LED for Display, Cabinet, Furniture

Display & Cove system for long runs!



- Super Slim linear with power track
- Greatly extends the length of a run with a single power point
- Fixtures snaps onto power track with no breaks in light output
- Available in silver, black
- To be used with constant voltage DC 24V driver
- Dimmable with available accessories



reddot award 2014  
winner



**MonoRail**  
Display & Cove System for Long runs!



MonoRail 1W Length (95mm)



MonoRail 4W Length (286mm)

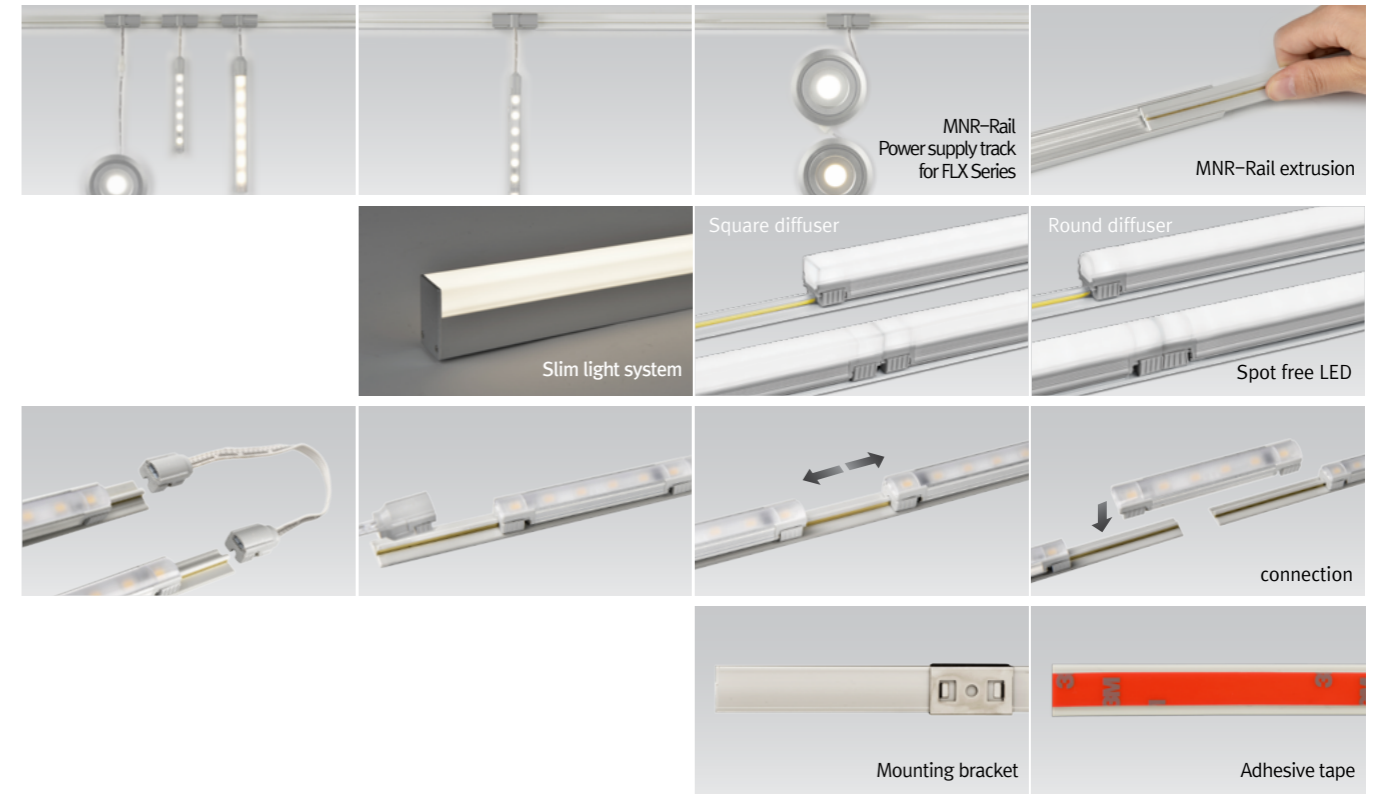


MonoRail 8W Length (572mm)

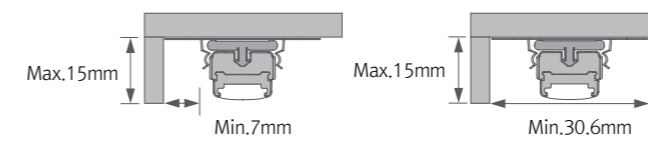
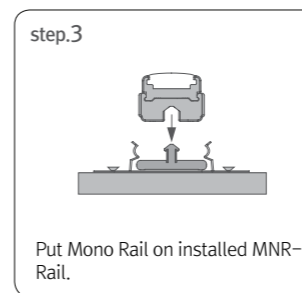
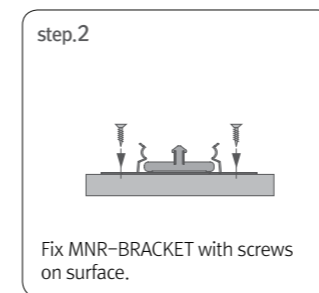
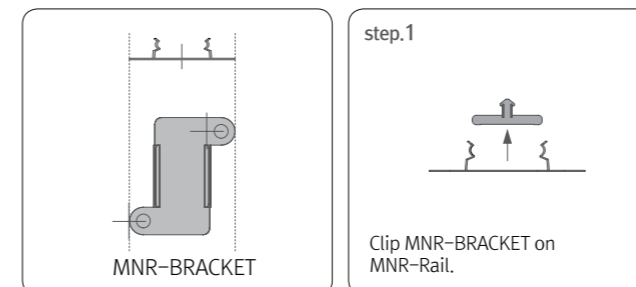


MNR-Rail (power supply track)

**Various options**



**Installation**



**Max. connection**

- MonoRail :180W in one row (Single power feed)
- LED Driver

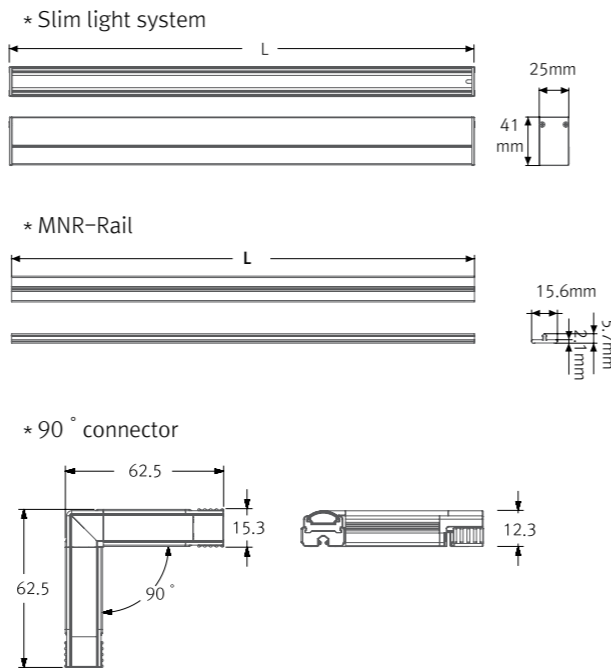
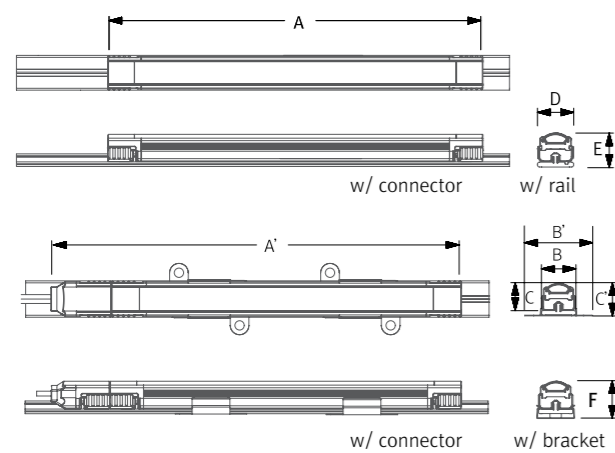
Model Name	Max. units for LED Driver		
	24V/30W	24V/75W	24V/200W
MNR1 40K-24V	23	57	123
MNR4 40K-24V	6	15	40
MNR8 40K-24V	3	9	20

## Specification

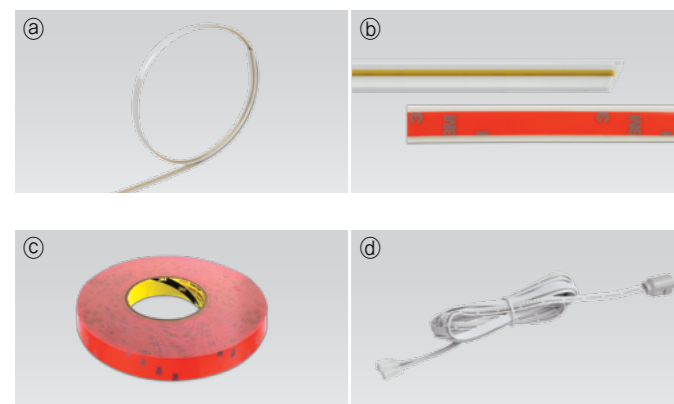
Model Name	Power Input	Lamp Power	Luminous Flux	Efficiency	Color Rendering	Available Color	Operating Temperature
MNR1 40K-24V	DC24V	1W	90 lm	90 lm/W	Ra > 85	2,700K/3,000K/3,500K/4,000K/6,000K	0-45°C
MNR4 40K-24V	DC24V	4W	360 lm	90 lm/W	Ra > 85	2,700K/3,000K/3,500K/4,000K/6,000K	0-45°C
MNR8 40K-24V	DC24V	8W	720 lm	90 lm/W	Ra > 85	2,700K/3,000K/3,500K/4,000K/6,000K	0-45°C

## Dimension

Model Name	Power Input (V)	Lamp Power (W)	A (mm)	A' (mm)	B (mm)	B' (mm)	C (mm)	C' (mm)	D (mm)	E (mm)	F (mm)
MNR1 40K-24V	DC24	1.3	95	121	15.3	30.6	12.3	14.9	15.6	14.6	17
MNR4 40K-24V	DC24	4	286	312	15.3	30.6	12.3	14.9	15.6	14.6	17
MNR8 40K-24V	DC24	8	572	598	15.3	30.6	12.3	14.9	15.6	14.6	17



## Accessories



- (a) Power supply track : MNR-Rail (20m)**  
Power supply track in Roll without adhesive  
Color : White, Gray, Black
- (b) Power supply track : MNR-Rail (1.2m)**  
Power supply track with adhesive tape  
Color : White, Gray, Black
- (c) Adhesive tape**  
Adhesive tape for MNR-Rail (16.5 m)
- (d) Power supply cable to the MNR-Rail : MNRPC (2500mm)**  
120W in one row (w/ terminal block)  
180W in one row (w/o terminal block)

## (e) Connecting cable between MNR-Rail

MNRPTC	MNRPTC1	MNRPTC2	MNRPTC4	MNRPTC6
150mm(6inch)	300mm(1feet)	600mm(1feet)	1200mm(4feet)	1800mm(6feet)

## (f) Connecting cable between MNR-Rail and FLX Stix NDV : MNRPTC-NDV

MNRPTC-NDV1	MNRPTC-NDV2
300mm(1feet)	600mm(2feet)

50W in one row

## (g) Connecting cable between MNR-Rail and FLX Stix HDV&DDV : MNRPTC-HDV

MNRPTC-HDV1	MNRPTC-HDV2
300mm(1feet)	600mm(2feet)

50W in one row

## (h) Connecting cable between MNR-Rail and FLX Spot DVS : MNRPTC-DVS

MNRPTC-DVS1	MNRPTC-DVS2
300mm(1feet)	600mm(2feet)

50W in one row

## (i) Sidefeed for seamless extension(1W) : MNR1 40K-24V-S

120W in one row

## (j) 90° connector : MNR1 40K-24V-90

MonoRail90° connector (1W)  
120W in one row

## (k) LED Driver with 12way distributor, with power cord (1,800mm)

Part No	FLC15-24V/T	FLC30-24V/T	FLC75-24V/ T
Capacity	15W 24V	30W 24V	75W 24V

## (l) LED Driver : FLC200-24V/T (200W 24V)

LED Driver With 12way distributor

## (m) MonoRail bracket : MNR-BRACKET (standard)

## (n) MonoRail bracket : MNR-BRACKET1 (optional)

## (o) Dimming Interface(0-10/1-10,DMX512)

FDA-L2M0 : Max. 200W (100W/CH, 2CH)  
FDA-L5M : Max. 200W (100W/CH, 5CH)

## (p) Dimming Interface (1-10V) : FDC-L10

Max. 100W (100W/CH, 1CH)

## (q) Slim light system (1.2M) : SLS-EXT

## (r) MNR-Rail extrusion line (1.2m)

Without MNR-Rail	Without MNR-Rail
Silver	Black
MNR-EXL-SV	MNR-EXL-BK

## (s) MNR-Rail extrusion corner (1.2m)

Without MNR-Rail	Without MNR-Rail
Silver	Black
MNR-EXC-SV	MNR-EXC-BK

## (t) MNR-Rail extrusion pole (300mm)

With MNR-Rail	With MNR-Rail
Silver	Black
MNR-EXP-SV	MNR-EXP-BK

## (u) End Cap : MNR-CAP

## (v) MNR-Rail protection cover : MNR-Rail cover

