

MonoRail Spot HO

LED for Display, Cabinet, Furniture

Slide and Swivel High Output LED Spotlight



- Compatible and linkable with MonoRail system
- Slide and Swivel High Output LED Spotlight
- Suitable for furniture and showcase application
- Simple Plug & Play connection to the power track
- Available in silver or black
- To be used with constant voltage DC 24V driver

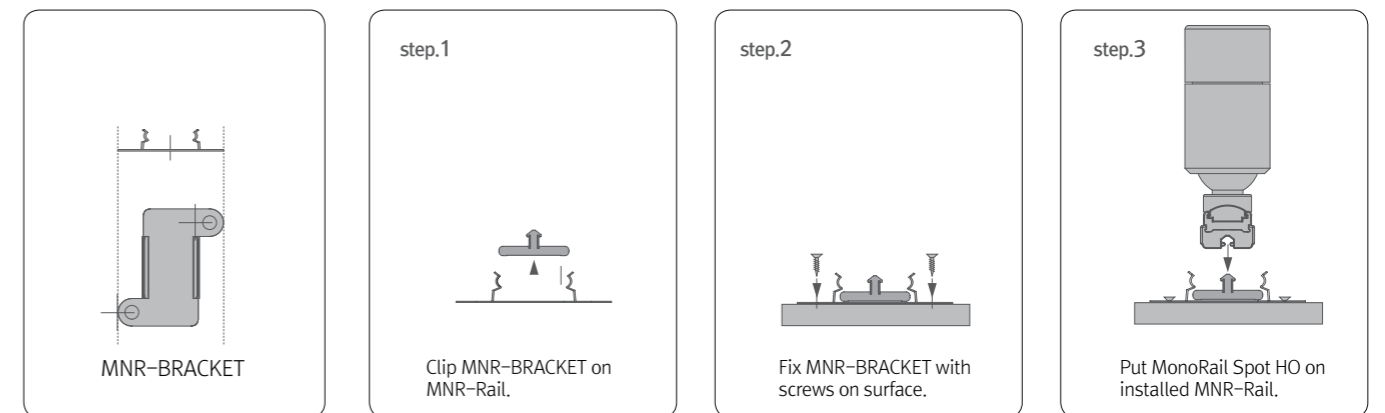




Various options



Installation



Max. connection

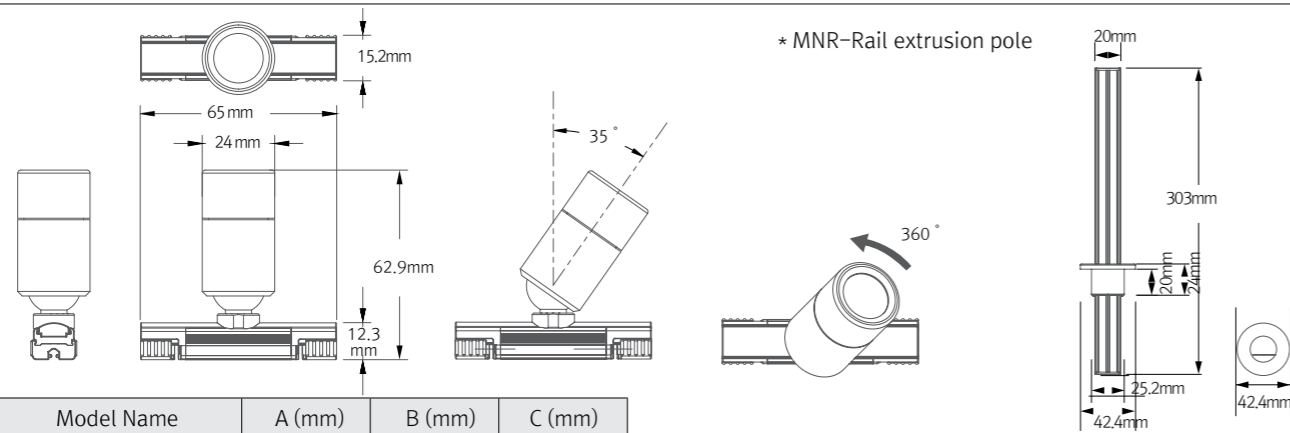
- MonoRail Spot HO: 180W in one row(Single powerfeed)
- LED Driver

LED Driver Model Name	Max. units for LED Driver			
	24V/15W	24V/30W	24V/75W	24V/200W
MRS3 40K-24V-SV	5	11	28	76

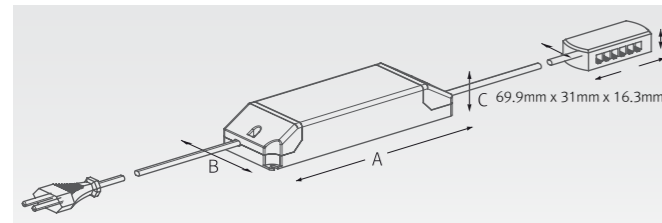
Specification

Model Name	Color	Power Input	Lamp Power	Luminous Flux	Efficiency	Color Rendering	Available Color	Beam Angle	Operating Temperature
MRS3 40K-24V-SV	Silver	DC24V	3W	225 lm	75 lm/W	Ra > 80	2,700K/3,000K/3,500K/4,000K/5,000K	25°, 45°, 60°	0-45°C
MRS3 40K-24V-BK	Black	DC24V	3W	225 lm	75 lm/W	Ra > 80	2,700K/3,000K/3,500K/4,000K/5,000K	25°, 45°, 60°	0-45°C

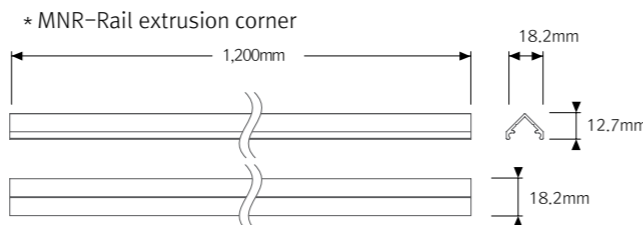
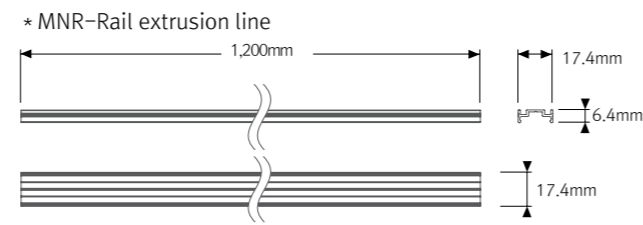
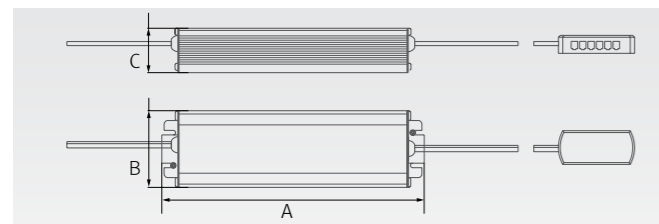
Dimension



Model Name	A (mm)	B (mm)	C (mm)
FLC15-24V/T	121	45	16
FLC30-24V/T	150	41	31
FLC75-24V/T	180	60	32



Model Name	A (mm)	B (mm)	C (mm)
FLC200-24V/T	228	68	39



Accessories



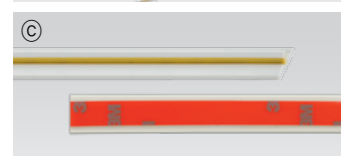
Ⓐ MonoRail Spot HO

Beam angle	Silver	Black
25°	MRS3 40K-24V-SV-25	MRS3 40K-24V-BK-25
45°	MRS3 40K-24V-SV-45	MRS3 40K-24V-BK-45
60°	MRS3 40K-24V-SV-60	MRS3 40K-24V-BK-60



Ⓑ Power supply track : MNR-Rail (20m)

Color : White, Gray, Black



Ⓒ Power supply track : MNR-Rail (1.2m)

Color : White, Gray, Black



Ⓓ Adhesive tape

MNR-Rail (16.5m)



Ⓔ Power supply cable to the MNR-Rail : MNRPC (2500mm)

120W in one row (w/ terminal block)
180W in one row (w/o terminal block)

Ⓛ Connecting cable between MNR-Rail

MNRPTC	MNRPTC1	MNRPTC2	MNRPTC4	MNRPTC6
150mm(6inch)	300mm(1feet)	600mm(1feet)	1200mm(4feet)	1800mm(6feet)



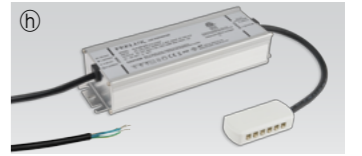
Ⓜ LED Driver with 12way distributor, with power cord (1800mm)

Part NO	FLC15-24V/T	FLC30-24V/T	FLC75-24V/T
Capacity	24V/15W	24V/30W	24V/75W



Ⓨ LED Driver : FLC200-24V/T (200W 24V)

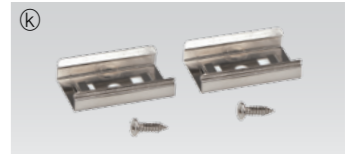
LED Driver With 12way distributor



Ⓩ Bracket : MNR-BRACKET (standard)



ⓐ Bracket : MNR-BRACKET1 (optional)



ⓑ Door and motion detection sensor (DC) : FLS-M24V

Voltage : DC 24V



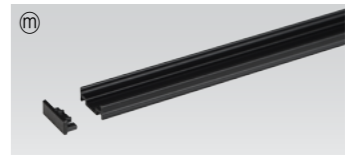
ⓓ Human-body detection sensor (DC) : FLS-P24V

Voltage : DC 24V



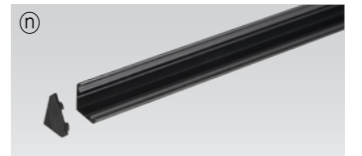
Ⓞ MNR-Rail extrusion line (1.2m)

Silver	Black
MNR-EXL-SV	MNR-EXL-BK
Without MNR-Rail	



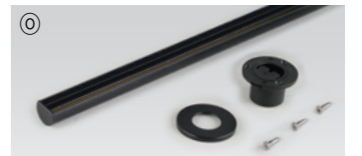
Ⓟ MNR-Rail extrusion corner (1.2m)

Silver	Black
MNR-EXC-SV	MNR-EXC-BK
Without MNR-Rail	



Ⓠ MNR-Rail extrusion pole (300mm)

Silver	Black
MNR-EXP-SV	MNR-EXP-BK
With MNR-Rail	



Ⓡ End cap : MNR-CAP

Color : White, Gray, Black



Ⓢ MNR-Rail protection cover : MNR-Rail cover

