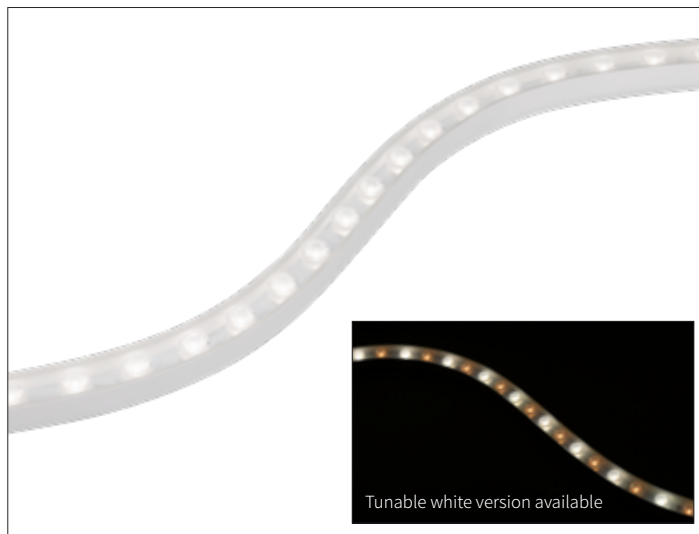


DATE PROJECT TYPE



PRODUCT FEATURES

- Flexible luminaire with optics.
- Bending direction both horizontally and vertically.
- IP 67 rating for outdoor and indoor application
- 90+ CRI Standard
- Various beam angles (20°, 35°, 45°, 30°x 60°)
- Field-cutttable 55.4mm (2.18")
- 20W per meter (6.1W/ft)
- Tunable white version available (2,200K-4,000K)

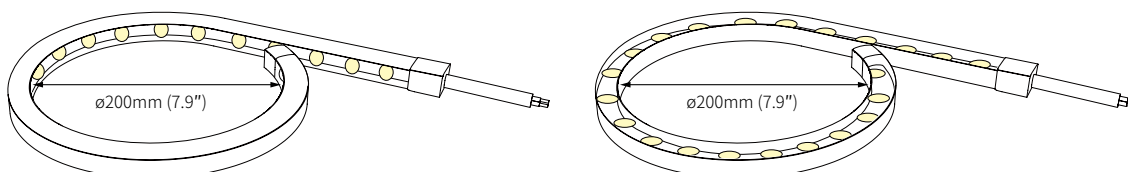
PRODUCT SPECIFICATIONS

IP Rate	IP67
Lamp Power	20W/m (6.1W/ft)
Power Input	24V DC
Color Rendering	Ra>90
Operating Temperature Ranges	-20°C to 40°C (-4°F to 104°F)
Maximum Length	5,000mm (16.5')
Minimum Length	91.4mm (3.6")
Minimum Bending Diameter	200mm (7.9")
Beam Angle	20°, 35°, 45°, 30°x 60°
Material	Silicone

SPECIFICATION

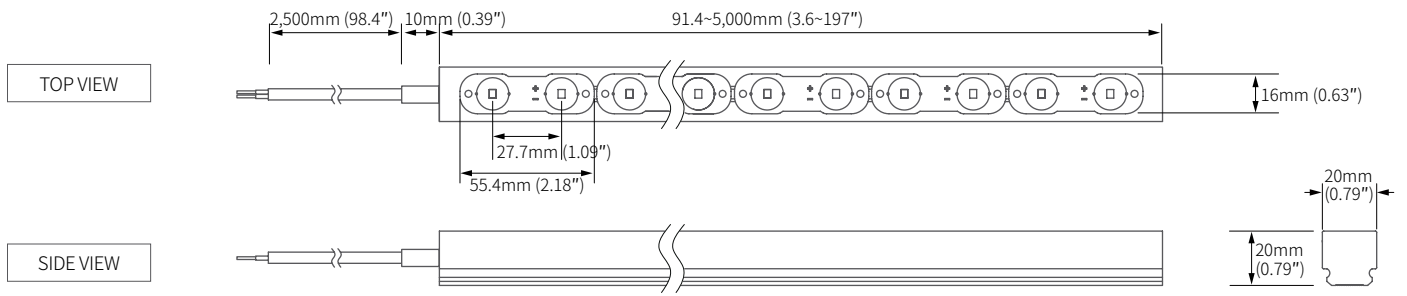
Model Number	Power Input	Lamp Power	Lumen/W	Color Temperature	Color Rendering	Operating Temperature	Beam Angle	Material
FNL 3D 27K-24V-C90	DC 24V	20W/m (6.1W/ft)	61 lm/W	2,700K	Ra > 90	-20°C to 40°C (-4°F to 104°F)	20° 35° 45° 30x60°	Silicon
FNL 3D 30K-24V-C90			75 lm/W	3,000K				
FNL3D 40K-24V-C90			77 lm/W	4,000K				
FNL 3D 65K-24V-C90			80 lm/W	6,500K				
FNL 3D SC-24V-C90			75 lm/W	2,200~4,000K				

BENDING DIAMETER

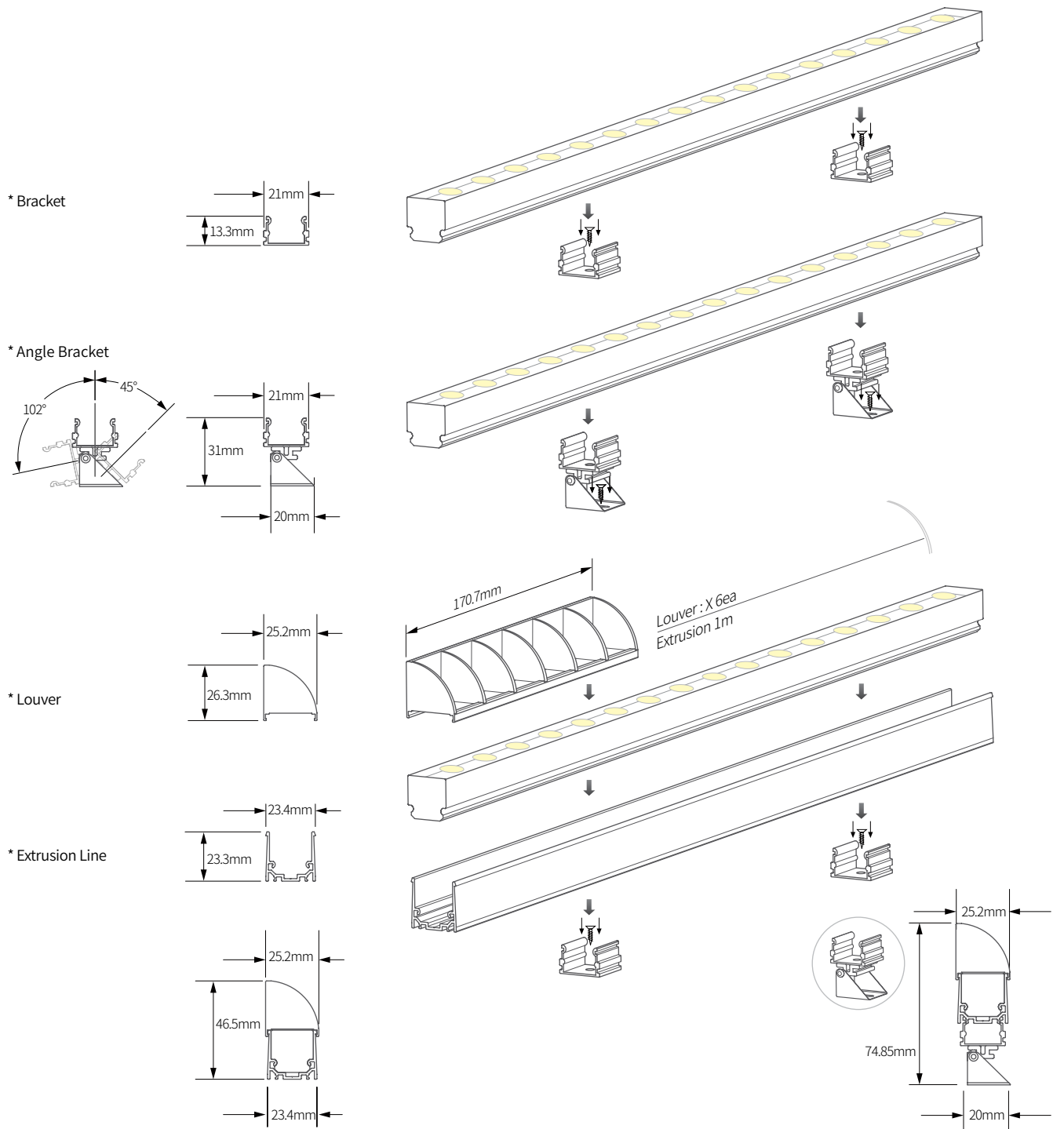


DIMENSIONS

Available in Standard Lengths of 1, 2, 3, 4, 5M reels

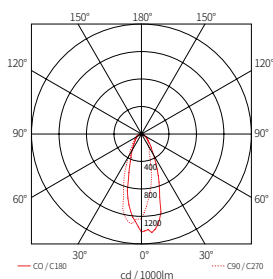


INSTALLATION



BEAM SPREADS

FNL 3D SC-24V-C90-35
75.3lm/W 1,505lm



COMPONENTS



Flexible Neon Lens 3D

- __ FNL 3D-(color)K-24V-C90 (1M)
- __ FNL 3D-(color)K-24V-C90 (2M)
- __ FNL 3D-(color)K-24V-C90 (3M)
- __ FNL 3D-(color)K-24V-C90 (4M)
- __ FNL 3D-(color)K-24V-C90 (5M)



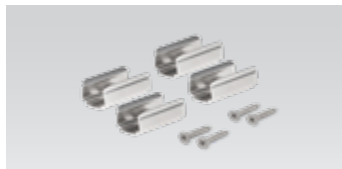
Flexible Neon Lens 3D Dual

- __ FNL 3D-SC-24V-C90 (1M)
- __ FNL 3D-SC-24V-C90 (2M)
- __ FNL 3D-SC-24V-C90 (3M)
- __ FNL 3D-SC-24V-C90 (4M)
- __ FNL 3D-SC-24V-C90 (5M)



FNL 3D Extrusion Line

- __ FNL 3D-EXL (1M)



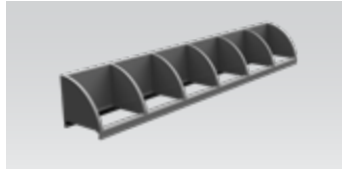
FNL 3D Mounting Bracket

- __ FNL 3D-BRACKET1 (1set = 4pcs)



FNL 3D Angle Bracket

- __ FNL 3D-BRACKET2 (1set = 4pcs)



FNL 3D Louver

- __ FNL 3D-Louver



Dimming Interface

- __ FDC-L10
- Max. 100W (100W/CH, 1CH) 0-10V Signal



Dimming Interface

- __ FDA-L2MO
- (0-10V/1-10V, DMX512)
- Max. 200W (100W/CH, 2CH)
- __ FDA-L5M (DMX512)
- Max. 200W (50W/CH, 5CH)



Dimming Interface (Dail)

- __ FDD-L1DA
- Max. 200W (100W/CH, 1CH)



Dimming Interface

- __ FDD-L20
- (0-10V/1-10V)



LED Drivers

- __ FLC30-24V/T (30W)
- __ FLC75-24V/T (75W)
- With distributor and power cord
- 1800mm (6')



LED Driver

- __ FLC200-24V/T (200W)
- with 12way distributor

A Larger selection of drivers are available including remote and hard wire drivers. Please consult factory.