

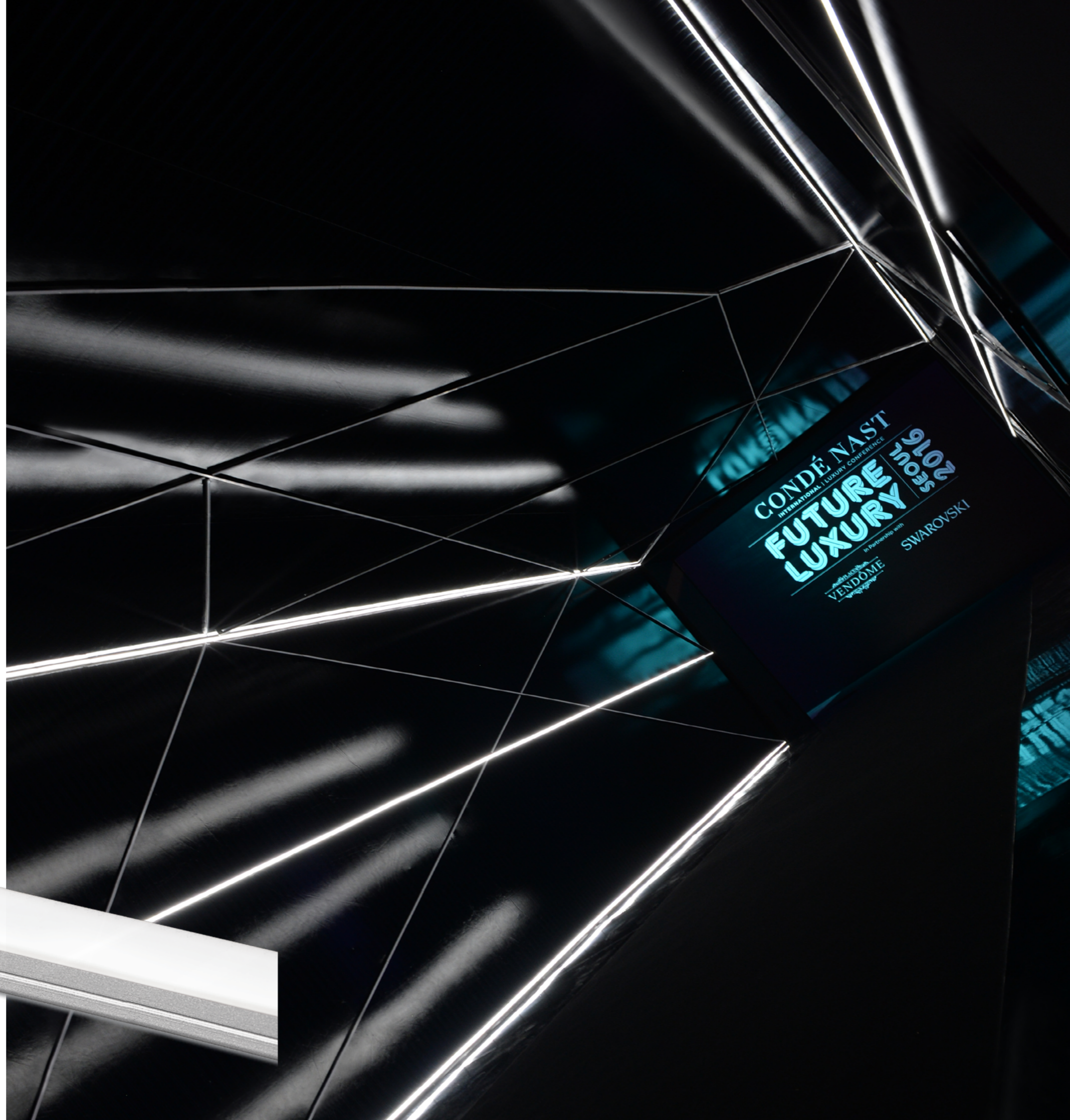
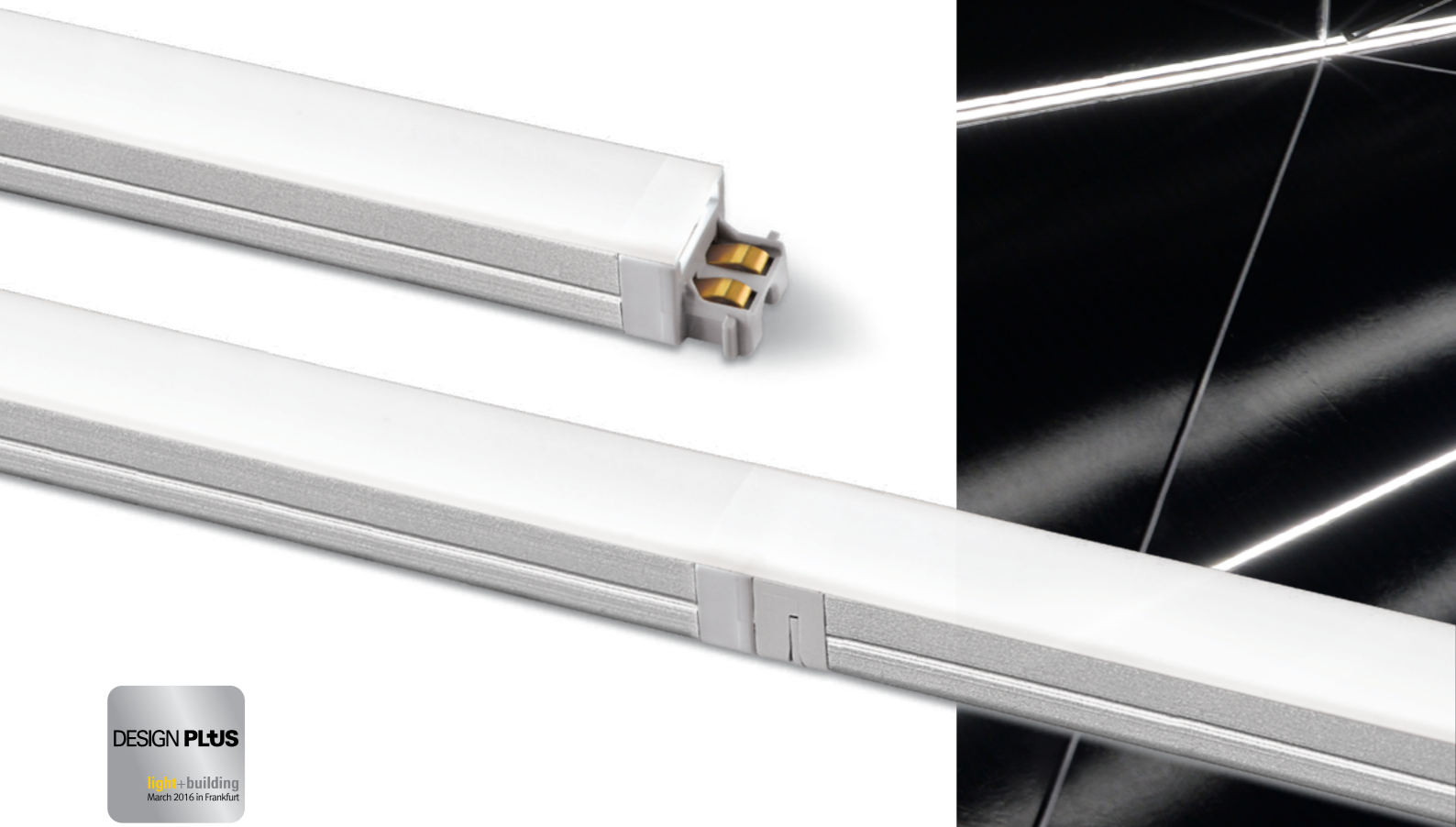
FLX Stix NDPro

LED for Display, Cabinet, Furniture & Cove

Linear perfection with NDPro



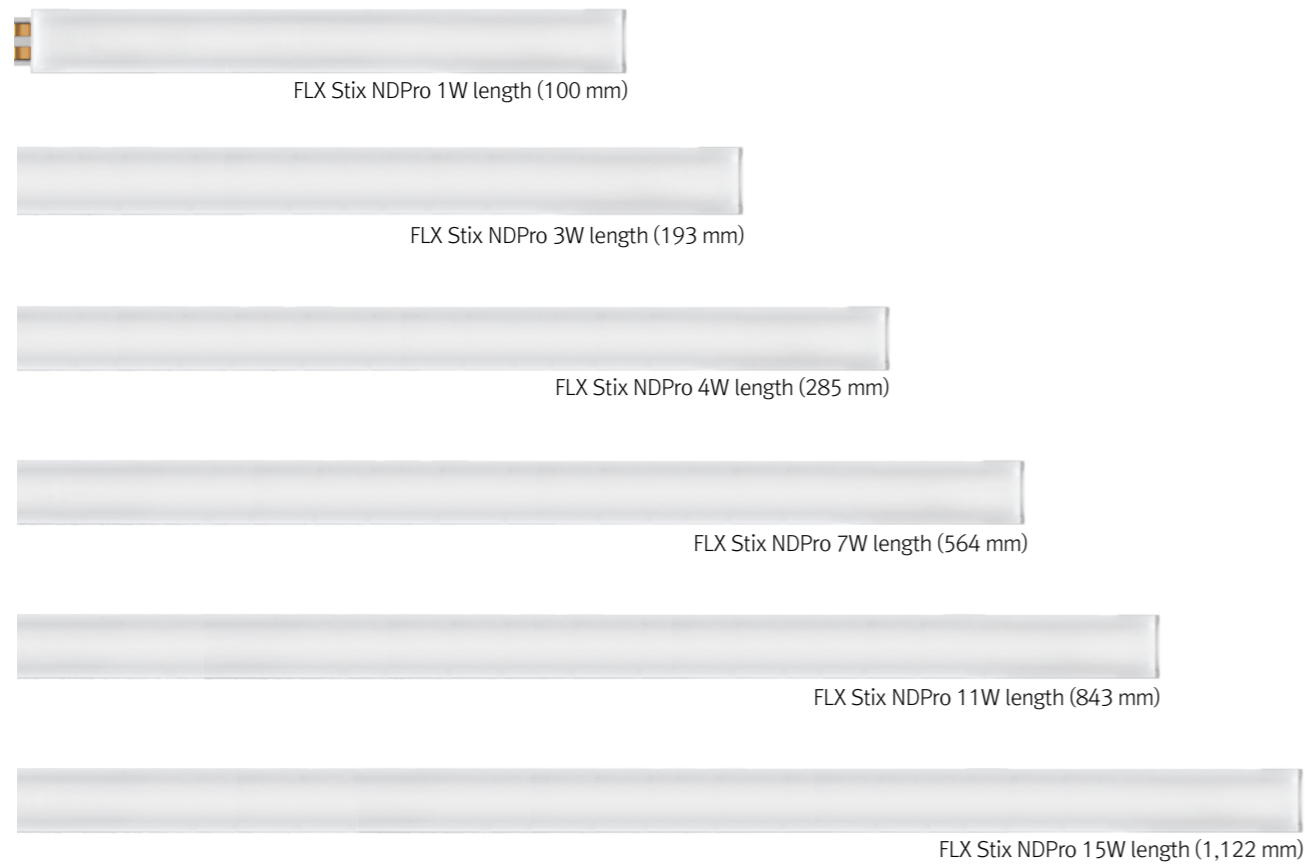
- Super Slim linear LED with spot free output
- Quick connection system
- Perfected with color consistency
- No dark spot at the linkage point for seamless effect
- Various mounting methods including magnetic
- Dimmable with available accessories



CONDÉ NAST
INTERNATIONAL LUXURY CONFERENCE
FUTURE LUXURY
2016
In Partnership with
SWAROVSKI
VENDÔME



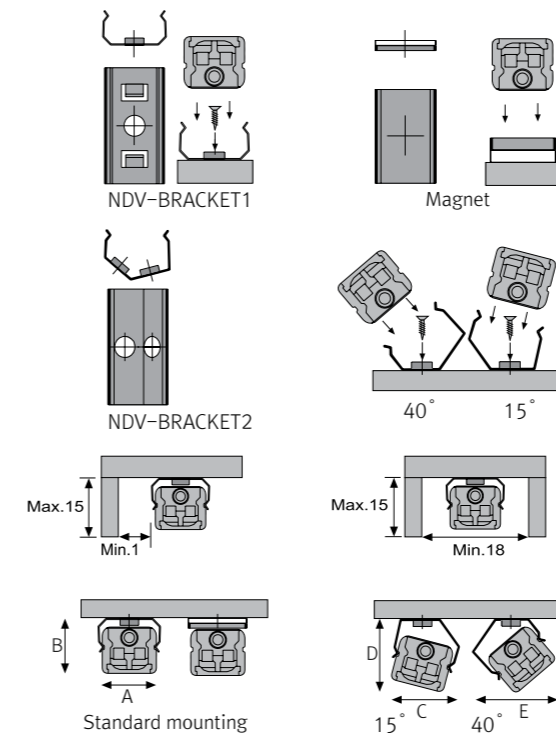
FLX Stix NDPro
Standard Output



Various options



Installation



Max. connection

- 55W in one row(single power feed)
- LED Driver

LED Driver Model Name	Max. units for LED Driver			
	24V/15W	24V/30W	24V/75W	24V/200W
NDP1 40K-24V-C90	12	25	62	160
NDP3 40K-24V-C90	5	10	25	66
NDP4 40K-24V-C90	4	7	18	50
NDP7 40K-24V-C90	2	4	10	28
NDP11 40K-24V-C90	1	2	6	18
NDP15 40K-24V-C90	1	2	5	13

- W/ Bracket

	A(mm)	B(mm)	C(mm)	D(mm)	E(mm)	F(mm)
Flat type	12	11	13.1	14.3	16	14.6

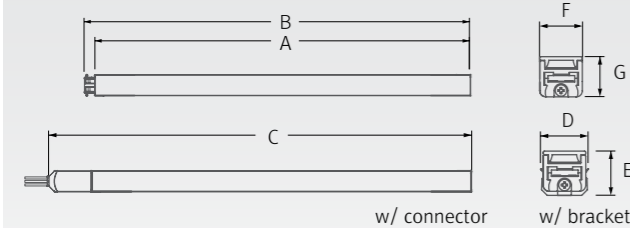
Specification

Model Name	Power Input	Lamp Power	Luminous Flux	Efficiency	Color Rendering	Available Color	Operating Temperature
NDP1 40K-24V-C90	DC24V	1W	80 lm	80 lm/W	Ra > 90	2,700K/3,000K/3,500K/4,000K/6,000K	0-45°C
NDP3 40K-24V-C90	DC24V	3W	240 lm	80 lm/W	Ra > 90	2,700K/3,000K/3,500K/4,000K/6,000K	0-45°C
NDP4 40K-24V-C90	DC24V	4W	320 lm	80 lm/W	Ra > 90	2,700K/3,000K/3,500K/4,000K/6,000K	0-45°C
NDP7 40K-24V-C90	DC24V	7W	560 lm	80 lm/W	Ra > 90	2,700K/3,000K/3,500K/4,000K/6,000K	0-45°C
NDP11 40K-24V-C90	DC24V	11W	880 lm	80 lm/W	Ra > 90	2,700K/3,000K/3,500K/4,000K/6,000K	0-45°C
NDP15 40K-24V-C90	DC24V	15W	1,200 lm	80 lm/W	Ra > 90	2,700K/3,000K/3,500K/4,000K/6,000K	0-45°C

Dimension

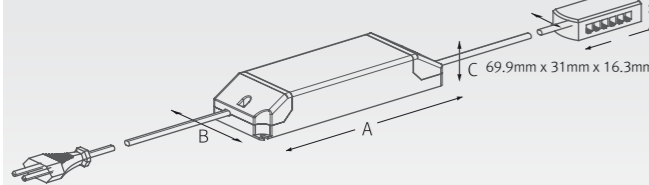
Model Name	Power Input (V)	Lamp Power (W)	A (mm)	B (mm)	C (mm)	D (mm)	E (mm)	F (mm)	G (mm)
NDP1 40K-24V-C90	DC 24	1	94.7	99.8	116.9	12	12.6	10.6	11.5
NDP3 40K-24V-C90	DC24	3	188.2	193.3	210.4	12	12.6	10.6	11.5
NDP4 40K-24V-C90	DC 24	4	279.2	284.3	301.4	12	12.6	10.6	11.5
NDP7 40K-24V-C90	DC 24	7	558.7	563.8	580.9	12	12.6	10.6	11.5
NDP11 40K-24V-C90	DC 24	11	837.7	842.8	859.9	12	12.6	10.6	11.5
NDP15 40K-24V-C90	DC 24	14	1,116.8	1,121.9	1,139	12	12.6	10.6	11.5

* Fixture

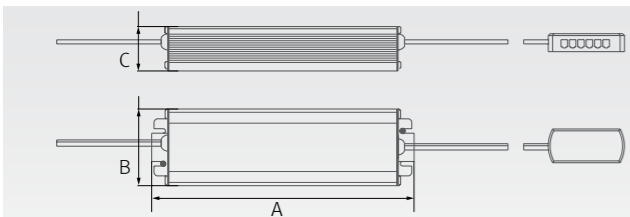


Model Name	A (mm)	B (mm)	C (mm)
FLC15-24V/T	121	45	16
FLC30-24V/T	150	41	31
FLC75-24V/T	180	60	32

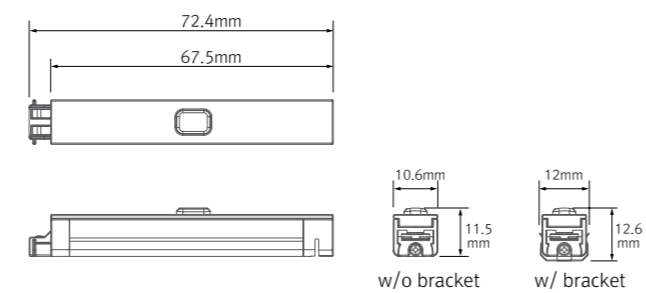
* LED Converter



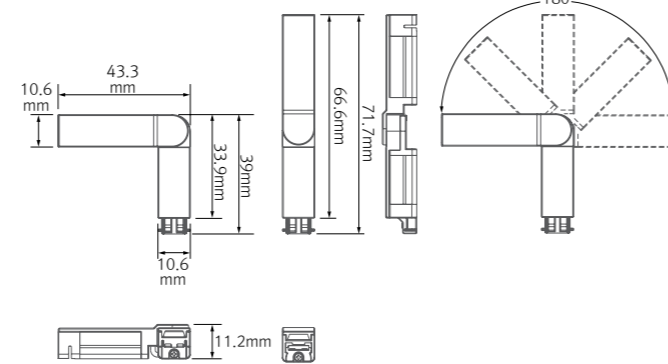
Model Name	A (mm)	B (mm)	C (mm)
FLC200-24V/T	228	68	39



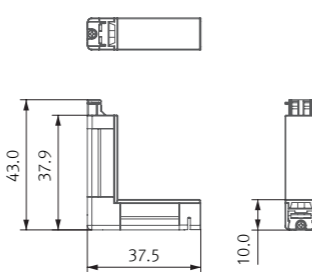
* Inline dimmer



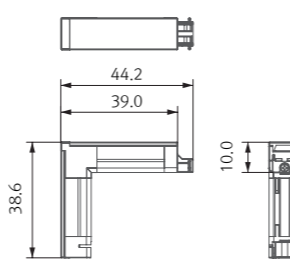
* Flexible connector



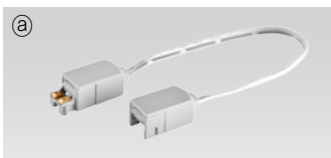
* Corner In Connector



* Corner Out Connector



Accessories



a Connecting cables(between FLX Stix NDPro & FLX Stix NDPro)

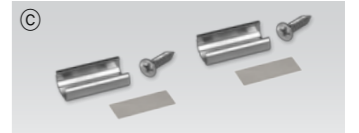
NDPPTC	NDPPTC1	NDPPTC2	NDPPTC4	NDPPTC6
150mm(6inch)	300mm(1feet)	600mm(2feet)	1200mm(4feet)	1800mm(6feet)



b Power cable : NDPPC
Power cable (2,500mm)

ⓐ Mounting bracket : NDP-BRACKET 1

NDP-BRACKET1(A) : 1 set = 2pcs
NDP-BRACKET1(B) : 1 set = 3pcs



ⓑ Angle bracket (15° & 40°) : NDP-BRACKET 2

NDP-BRACKET2(A) : 1 set = 2pcs
NDP-BRACKET2(B) : 1 set = 3pcs

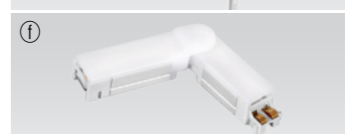


ⓒ Sidefeed for seamless extension (3W) : NDP3 40K-24V-S

The dimension is the same as NDP3 40K-24V
Powered only through cable, no power supply on the input connector



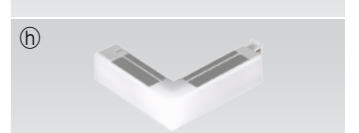
ⓓ Flexible Connector : NDP1 40K-24V-C90-FLEX



ⓔ In Connector : NDP1 40K-24V-C90-CI



ⓕ Out Connector : NDP1 40K-24V-C90-CO



ⓖ End cap : NDP-CAP

Included in fixture



ⓗ LED Driver with 12way distributor, with power cord (1800mm)

Part No	FLC15-24V/T	FLC30-24V/T	FLC75-24V/T
Capacity	15W 24V	30W 24V	75W 24V



ⓓ LED Driver : FLC200-24V/T (200W 24V)

LED Driver With 12way distributor



ⓓ Dimming Interface (1-10V) : FDC-L10

Max. 100W (100W/CH, 1CH)



ⓓ Dimming Interface(0-10/1-10,DMX512)

FDA-L2M0 : Max. 200W (100W/CH, 2CH)
FDA-L5M : Max. 200W (100W/CH, 5CH)



ⓓ Inline dimmer : NDPDIM

Max 55W in a row



ⓓ Door and motion detection sensor : FLS-M24V

Voltage : DC 24V



ⓓ Human-body detection sensor : FLS-P24V

Voltage : DC 24V

